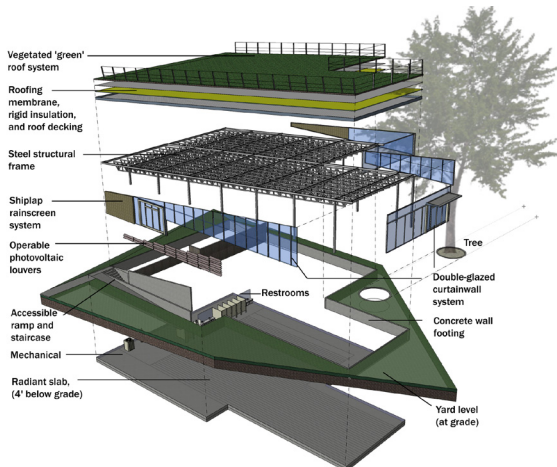




RE-ENVISIONING THE YARD

A NEW SUSTAINABLE MODEL FOR A CAMPUS TYPOLOGY

LOCATION | Harvard University, Cambridge, MA, USA
CLIENT/COMPETITION SPONSOR | Harvard Green Campus Initiative
AWARDS/RECOGNITION | Honorable Mention
DATE OF COMPLETION | Spring 2006



XChange's submission for the 2006 *Harvard University Vision of Sustainability* ideas competition is inspired by the call to do more with less within the confines of a developed campus.

The proposed design for a series of steel-and-glass vegetated roof pavilions - strategically located in Harvard's iconic Old Yard - responds to the resultant spatial and urban context generated by campus circulation to form new public spaces that are inhabitable both inside and above it. The proposed development provides approximately 14,000 SF of additional student activity space with no reduction in existing open space. Proposed new green roof facilities include two student centers, café, Harvard COOP used book annex, and a visitor center for the Harvard Green Campus Initiative.

The proposal received an Honorable Mention and was included in a campus-wide sustainability exhibition in 2006.